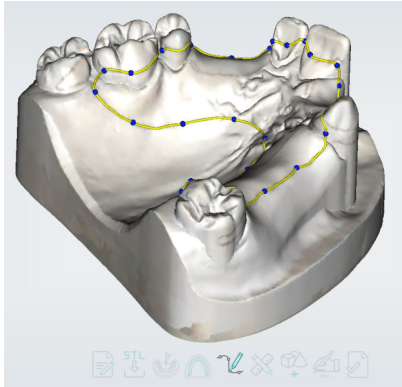
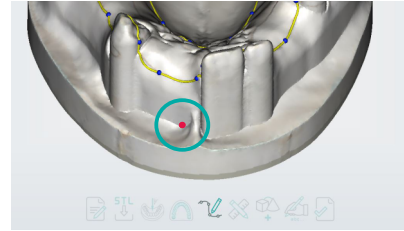


Creating a bite registration

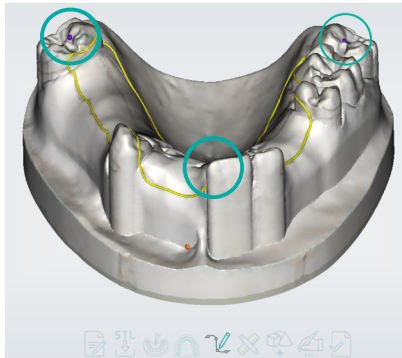
1. contour of bite registration base



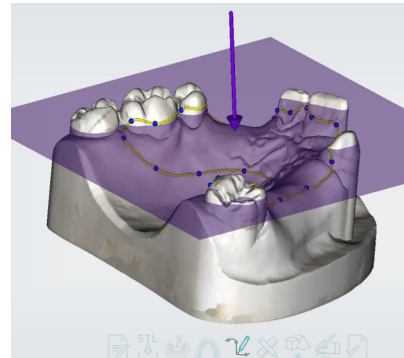
2. define vestibular fold



3. define occlusal plane

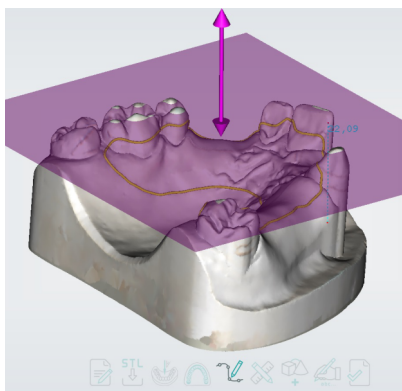


4. generated occlusal plane



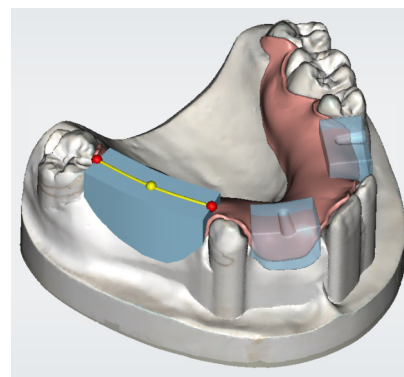
5. adjustments for occlusal plane:

- scroll mousewheel: move the plane up and down
- moving the upper arrow: tilt the plane



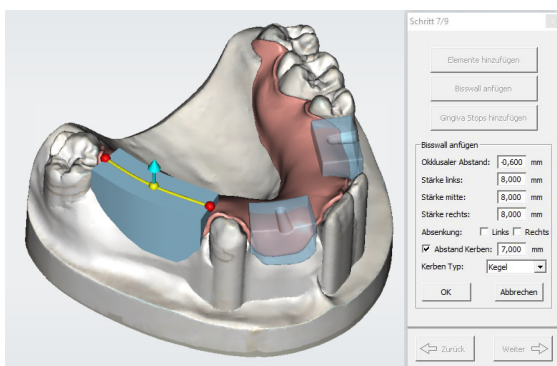
6. define bite registration rim with spline

- set spline with left mouse button
- finish spline with right mouse button



7. adjust bite registration rim

- scroll mousewheel: adjust thickness of the rim
- ctrl + scroll mousewheel: adjust height of the rim



8. finished bite registration rims: adapted to occlusal plane

